



TAYLOR'S
UNIVERSITY
Wisdom • Integrity • Excellence

Welcome to

Taylor's Digital Prospectus



TAYLOR'S UNIVERSITY

RISE WITH THE BEST AND GRADUATE IN DEMAND

Since its inception in 1969, Taylor's has continuously provided excellent services for its students in terms of diverse study options, relevant curriculum and teaching methods, ongoing partnerships with leading universities worldwide, strong industry linkages, up-to-date facilities and well-equipped campuses.

Taylor's University nurtures its students in the three aspects of intelligence: intellect, practical wisdom, and craft through its Taylor'sphere ecosystem of flexible curriculum, innovative pedagogy, multidisciplinary projects, impact-based research, as well as networks with peers and alumni.



ACHIEVEMENTS

OUR AWARDS VALIDATE OUR WORLD-CLASS GRADUATES, STANDARDS & FACILITIES

WORLD
TOP 1%

UNIVERSITIES
#251



TOP 40

IN ASIA



NO. 1

PRIVATE UNIVERSITY
IN SOUTHEAST ASIA
5 YEARS IN A ROW



WORLD
TOP 20

FOR GRADUATE
EMPLOYABILITY RATE



VICE-CHANCELLOR & PRESIDENT'S MESSAGE

Taylor's University is a reputable and leading private education institution in Malaysia. With more than 50 years of experience in the education scene, we remain steadfast in fostering excellence in education, innovation, and the holistic development of our students. We infuse our research, education, and advocacy with purpose and meaning to empower our community in pursuing their passion and purpose, thus leaving a positive impact to their surrounding community.

Our prime location exposes our diverse student body from almost 100 countries to the nation's rich cultural landscape and attracts the brightest and most creative students from around the world. Our students come together to create a vibrant and exciting community that supports a wide range of sporting, cultural and leisure activities, which have become the hallmark of the Taylor's experience – cultivating a positive campus environment.

We hope that Taylor's University will be your higher education institution of choice as we remain committed in our stance as a leading institution that is equipped to empower its students to address the challenges of the modern world. Most importantly, let us work together driven by the limitless potential within our community to ensure that when you graduate, you are ready to create your own pathway to excellence and become a productive leader of change.

We look forward to seeing you at Taylor's Lakeside Campus.

Warmest Regards,
Professor Barry Winn
Vice Chancellor and President,
Taylor's University



GLOBALLY RANKED SUBJECTS

TOP 20

#20
Hospitality & Leisure
Management

TOP 50

#21-50
History of Art

TOP 100

#51-100
Art & Design

Marketing

Data Science & AI

TOP 150

#101-150
Architecture
& Built Environment

Accounting & Finance

Business & Management
Studies

Social Sciences
& Management

Arts & Humanities

TOP 250

#151-200
Economics & Econometrics

Pharmacy & Pharmacology

#201-250
Computer Science
& Information Systems

Communication
& Media Studies

TOP 400

#251-300
Education & Training

#301-375
Sociology

#351-400
Electrical & Electronics
Engineering

TOP 500

#401-450
Engineering & Technology

#451-500
Medicine

TOP 600

#501-575
Mechanical Engineering



TAYLOR'S
UNIVERSITY

Wisdom • Integrity • Excellence

LIBERAL ARTS & SCIENCES



TAYLOR'sphere™

TAYLOR'S SCHOOL OF LIBERAL ARTS & SCIENCES

Bachelor of Performing Arts (Honours)
Bachelor of Psychology (Honours)
Bachelor of Social Science (Honours) in International Relations

WORLD TOP 150

SOCIAL SCIENCES
& MANAGEMENT

WORLD TOP 375

#1 MALAYSIA &
SOUTHEAST ASIA
PRIVATE UNIVERSITY

SOCIOLOGY

WORLD TOP 150

ARTS AND HUMANITIES

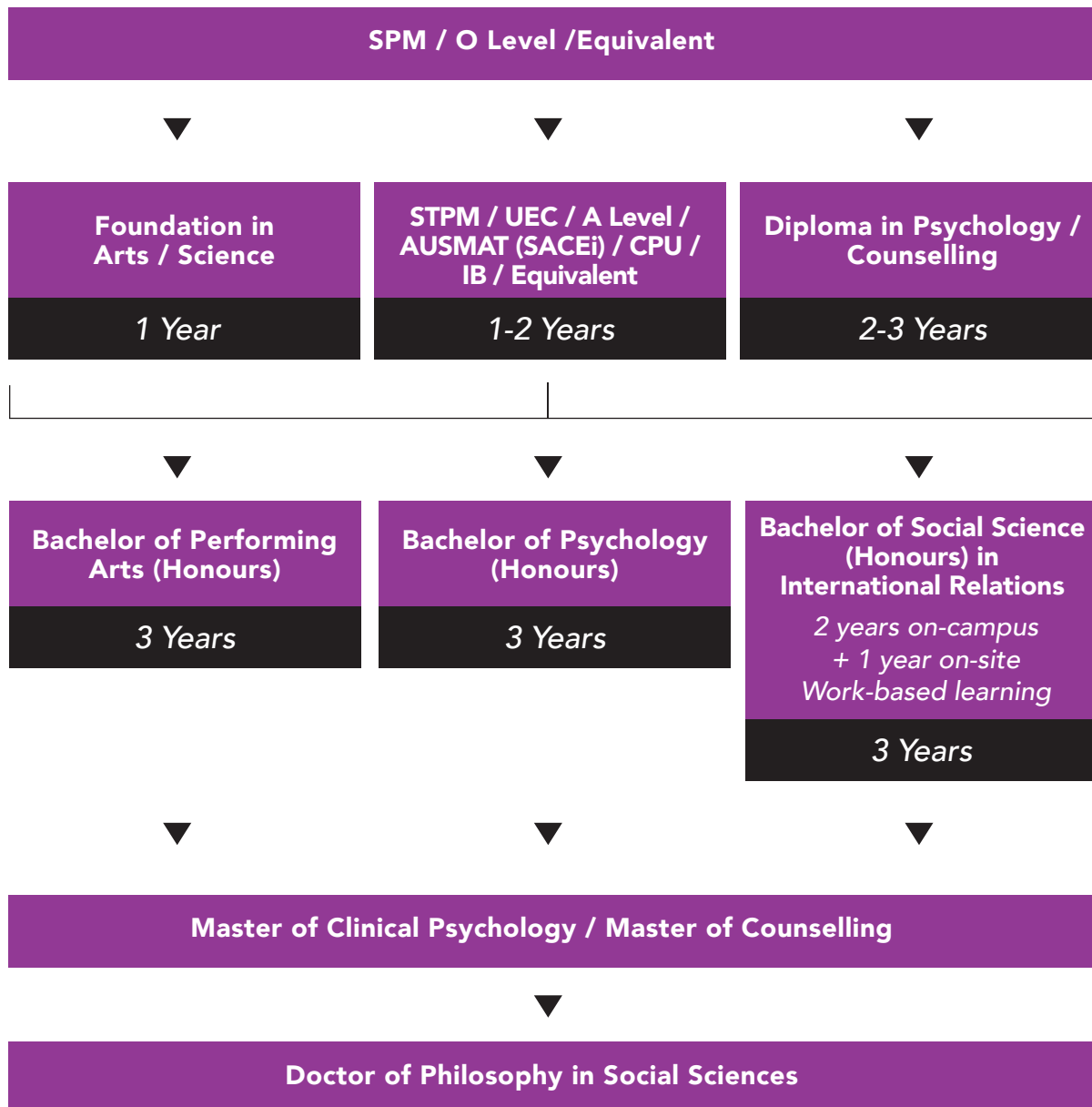


WORLD
UNIVERSITY
RANKINGS

BY SUBJECT 2025



EDUCATION PATHWAY



**Admission is subject to the transfer requirement established by the respective universities*

Note: Diploma in Psychology / Counselling is not offered by Taylor's University. Advance standing for Diploma into Year 2 Degree is subject to credit exemptions approval and is on a case-by-case basis.

INDUSTRY LEADERS CO-DESIGNING OUR PROGRAMMES

The School's Industry Advisory Panel (IAP) consists of leading professionals and industry experts. They work closely with our faculty to review and refine our curriculum, ensuring that our programme content is up to date with current industry practices and requirements. These mutually beneficial partnerships also connect students to industry placements and career opportunities, ensuring that our graduates are industry-ready and future-proof.

REAL-WORLD EXPERIENCE

The School also offers work-based learning (WBL) in selected programmes, whereby students undertake modules in an industrial setting for a year, guided by industry and academic supervisors. This seamlessly integrates with the immersive classroom learning in the first two years of their degree, as we collaborate with experts renowned in their fields to enrich learning with real-world experience. These unique partnerships expose students to innovative teaching styles, syllabi, and facilities, so they graduate fully prepared to make their mark.



IMPACTFUL CAREER OPTIONS

BACHELOR OF PERFORMING ARTS (HONOURS)

- Stage, TV, and Film*
- Actor / Actress, Singer, Dancer
 - Director
 - Writer
 - Producer
 - Stage Manager
 - Production Manager
 - Performer
 - Scriptwriter
 - Presenter
 - Movement Coach
 - Corporate Training
 - Storyteller
- Education*
- Drama teacher
 - Dance teacher
 - Voice teacher
 - Arts researcher
 - Speech Teacher
 - Teacher / Lecturer
- Advocacy and Media*
- Arts and Culture Manager
 - Curator
 - Arts writer / Critic

BACHELOR OF PSYCHOLOGY (HONOURS)

- Mental Health and Well-Being*
- Psychologist (Clinical / Health / Developmental)
 - Counselor
 - Therapist
 - Coach
 - Social worker (Social Service Specialist)
 - Rehabilitation officer
- Corporate*
- Human resource consultant
 - Trainer
 - Consultant
 - Manager
 - Learning and Development Specialist
 - Industrial and Organisational Psychologist
- Education*
- Researcher
 - Lecturer
 - Policy maker
 - Teacher
 - Career counselor
- Criminal Justice*
- Investigator
 - Criminal profiler
 - Forensic Psychologist
 - Criminal Psychologist
- Media*
- Marketer
 - Advertiser
 - Actor
 - Writer/author
 - Consumer psychologist

BACHELOR OF SOCIAL SCIENCE (HONOURS) IN INTERNATIONAL RELATIONS

- Diplomatic Service
- Foreign Affairs Specialist
- Career with Intergovernmental Organisations (United Nations, ASEAN, APEC, etc)
- Expert Consultant in Security and Defense sectors
- Career with Multinational Corporations
- Political Risk Analyst
- Journalism
- Activism, Advocacy and Non-Governmental Organisations
- Academia
- Researcher in Think Tanks

OVERSEAS TRANSFER OPTIONS*



UNITED KINGDOM

via Bachelor of Psychology (Hons)

UNIVERSITY OF PORTSMOUTH

- BSc (Hons) Psychology
- BSc (Hons) Forensic Psychology
- BSc (Hons) Sports and Exercise Psychology

via Bachelor of Social Science (Hons) in International Relations and Bachelor of Performing Arts (Hons)

UNIVERSITY OF LEEDS

- BA International Development
- BA International Relations
- BA Politics
- BA Theatre and Performance

via Bachelor of Social Science (Hons) in International Relations and Bachelor of Psychology (Hons)

UNIVERSITY OF SHEFFIELD

- BA International Relations in Politics
- BSc (Hons) Psychology
- BSc Psychology with Placement Year

via Bachelor of Performing Arts (Hons)

MIDDLESEX UNIVERSITY LONDON

- BA Theatre (Acting)
- BA Theatre (Design)
- BA Theatre (Directing)

via Bachelor of Psychology (Hons) and Bachelor of Social Science (Hons) in International Relations

UNIVERSITY OF ESSEX

- BA Psychodynamic Practice
- BA Childhood Studies
- BA Psychosocial and Psychoanalytic Studies
- BA Psychology
- BSc Psychology
- BSc Cognitive Science
- BSc Psychology with Economics
- BSc Psychology with Cognitive Neuroscience
- BA Global Politics
- BA International Development
- BA International Relations
- BA Philosophy, Politics and Economics
- BA Politics
- BA Politics and International Relations
- BA Politics with Business
- BA Politics with Human Rights
- BSc Economics and Politics
- BSc Politics and International Relations
- BSc Politics with Business
- BSc Politics with Data Science
- BA Liberal Arts
- BA Global Studies
- BA Social Change

via Bachelor of Psychology (Hons)

CARDIFF UNIVERSITY

- BSc Psychology
- BSc Psychology with Professional Placement

via Bachelor of Psychology (Hons)

and Bachelor of Social Science (Hons) in International Relations

UNIVERSITY OF DUNDEE

- MSc Spatial Planning with Sustainable Urban Design

via Bachelor of Social Science (Hons) in International Relations and Bachelor of Psychology (Hons)

UNIVERSITY OF BRISTOL

- BSc International Social and Public Policy
 - BSc Psychology (limit of 5 students per year)
- via Bachelor of Psychology (Hons)*

QUEEN'S UNIVERSITY BELFAST

- BSc Psychology (limit of 5 students per year)



AUSTRALIA

via Bachelor of Psychology (Hons), Bachelor of Performing Arts (Hons) and Bachelor of Social Science (Hons) in International Relations

UNIVERSITY OF MELBOURNE

- Bachelor of Arts

via Bachelor of Psychology (Hons)

UNIVERSITY OF ADELAIDE

- Bachelor of Psychological Science

via Bachelor of Psychology (Hons)

THE UNIVERSITY OF QUEENSLAND

- Bachelor of Psychological Science (Honours)

via Bachelor of Psychology (Hons) and Bachelor of Performing Arts (Hons)

DEAKIN UNIVERSITY

- Bachelor of Psychological Science
- Bachelor of Creative Arts (Drama)



REVOLUTIONISING PSYCHOLOGY STUDIES FROM DEGREE TO MASTER'S

Taylor's ensures that its Psychology programmes stay updated to address the needs of the current market and to close the service gaps in the community.

CENTRE FOR HUMAN EXCELLENCE & DEVELOPMENT



Taylor's Centre for Human Excellence and Development (CHED), a first-of-its-kind research and therapy centre in Malaysia and Southeast Asia, intends to revolutionise study and applied research in the area of psychology and behavioural sciences in Malaysia to augment positive social progress in the country.

It enables academics and researchers to embark on advanced studies in behavioural sciences across disciplines including psychology, food studies, education, business and social sciences.

The strategic positioning of CHED is to support the following programmes:

- Master of Counselling (2022)
- Master of Clinical Psychology (2021)
- Bachelor of Psychology (Hons)
- Master of Food Studies
- Master (Research) and PhD programmes across the University

All other research-related undergraduate programmes will be supported.

SOCIO-BEHAVIOURAL LABORATORY

a.k.a TU C.A.B. Lab (Cognitive, Affective, Behavioral)



Southeast Asia's first AI-equipped behavioural science laboratory

The Socio-Behavioural Lab uses technologies such as face-tracking cameras, brain scanners, virtual reality equipment and artificial intelligence software that tracks facial and eye movements to identify emotions.



Emotion recognition software

The university's proprietary emotion recognition software can detect micro-interactions such as changes in facial expressions. It allows researchers to study how humans interact with each other. It uses deep learning to emulate the human brain's ability to identify objects, graphics and other human characteristics.

LEVERAGING ADVANCED ARTIFICIAL INTELLIGENCE TECHNOLOGY



FACE-TRACKING CAMERAS

Equipped with 13 face-tracking cameras, researchers can monitor and collect data through facial recognition features to support advanced research and studies.



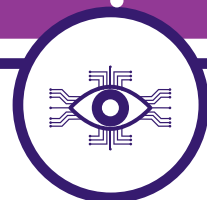
BRAIN SCANNERS & BRAINWAVES READER

Advanced tools that can be used to record neural activity for research purpose.



COMPREHENSIVE PERSONALITY, INTELLIGENCE, EMOTIONAL, COGNITIVE AND VOCATIONAL TESTING TOOLS

Equipped with developmental assessment and mental health testing tools to support therapeutic interventions by clinical and counselling practitioners.



TOBII EYE-TRACKING DEVICE

Using world's leading eye tracking devices, researchers can also deepen their understanding of human behaviour and create new frontiers in fields such as psychology and neuroscience, infant and child development, clinical research, and more.





CLINICAL CENTRE- BEHAVIOURAL LABORATORY

a.k.a. TU H.E.A.R.T. Psychology Hub (Healing, Educating, Assessing, Relating, Thriving)



The Clinical Centre is a therapeutic space, tailored predominantly as a training and skill development center for students of the Master and Undergraduate programmes who seek to develop therapeutic skills. The Centre will be used to support internal practical training and for the planned Master of Clinical Psychology and Master of Counselling programmes.



Private practitioners may elect to be associates of the centre to see their personal clients and run workshops for the public. All practitioners will be subject to the ethical standards of the center and operate on their own professional licenses.



Equipped with both Clinical and Counselling tools to support the wellness and mental health needs of clients, students and practitioners.



Comprises of seven therapy rooms

- Four (4) rooms are individual - couple therapy rooms
- One (1) family therapy room
- Two (2) group therapy rooms



The Psychological testing tools cover intelligence, cognitive, emotional, behavior, neuropsychological tools that can be used among adults, adolescents and children.



PERFORMING ARTS

PUSHING BOUNDARIES TO TAKE ON THE WORLD STAGE



INTRODUCTION FOR 3 SPECIALISATIONS



PERFORMANCE SPECIALISATION

This track is your gateway to a world of storytelling and expression, equipping you with the tools to bring characters to life. Dive into the art of devising performance texts, master the nuances of voice and speech, and let your body speak through movement. Through our acting modules, you'll also refine your skills to captivate any audience.



MUSIC SPECIALISATION

Perfect your language and diction, and learn the art of movement and stagecraft to become a versatile musician. Develop your ear and musicianship skills, and dive deep into vocal studies. Your talent is your instrument, so you will explore a rich repertoire of songs and scenes while honing your craft.



DANCE SPECIALISATION

Step into a world of movement and rhythm. Embrace the grace of Ballet, the expressive flair of Contemporary Dance, the vibrant energy of Hip Hop and Jazz Dance, and even the rich traditions of Silat and Malaysian Traditional Dance. Dance isn't just an art; it's a language of the soul, and this track guides you to become fluent.

Audition Note:

1. Students who choose to audition for the dance specialisation must prepare a solo dance piece in addition to the one monologue.
2. Students who choose to audition for the music specialisation must prepare a solo vocal piece (singing) in addition to the one monologue.



KUALA LUMPUR PERFORMING ARTS CENTRE (klpac)

Industrial-standard facilities

- Pentas 1 – Proscenium theatre with 504 seats
- Pentas 2 – Experimental black box theatre with 200 seats (modular seating)
- Indicine for independent film makers and theatrical performances
- Academy with 9 Studios for rehearsals and trainings
- Box Office
- Set Construction Workshop
- Green Room for artistes
- Pre-function Foyers
- Wardrobe Room
- Laundry Room
- Costume & Props Store
- Technical Training Studio
- Venue Technicians Office
- Dedicated Loading Bays
- Production Office
- Lighting, Sound & Piano Store
- Technical Workshop



LEARN FROM INDUSTRY EXPERTS

SOCIAL SCIENCES



TINA JAMALUDDIN

*Adjunct Professor, Bachelor of Social Science with Honours
(International Relations)*

Tina Jamaluddin has over 20 years of cross-functional experience covering International Relations and International Business Development, mentoring SMEs, start-ups, public policy. In the last few years she has gained extensive experience in Government Affairs for the ASEAN region and the digital economy.

With her wide-ranging Industry exposure encompassing manufacturing, food & beverage and international trade industries, as well as stints with United Nations agencies and international consultancy companies, she is also regularly invited to be a speaker and panellist at various international conferences.

As the Senior Country Representative for Malaysia in the US-ASEAN Business Council, Tina serves as the senior liaison officer between the Council, U.S. private sector (MNCs), Government of Malaysia and the U.S. diplomatic presence in Malaysia. Alongside driving advocacy across a wide range of issues and industries, she's responsible for building networks within the Government ministries, relevant agencies, private sector, other business councils and associations, the media as well as Influencers.

PERFORMING ARTS



SUSANNA SAW

Director, Young Choral Academy

Susanna, an esteemed music educator in Malaysia, holds a Master's in Music Education (Choral Focus) from Westminster Choir College, USA. She teaches at the University of Malaya and the Malaysian Institute of Art (MIA), with her choirs achieving international acclaim.

In 2007, Susanna founded the Young Choral Academy in Kuala Lumpur and introduced the Kodály Teachers' Training Course to enhance local music education, playing a pivotal role in the 2019 24th International Kodály Symposium. During the pandemic, she organised monthly Kodály Online Hangouts, bringing global music educators together.

Internationally, she's a respected jury member for INTERKULTUR's Asia Pacific and World Choir Games and actively contributes to the Asia-Pacific Choral Council under the International Federation of Choral Music (IFCM). She also founded the Malaysian Choral Eisteddfod (MCE) in 2002, hosting symposiums and international choir festivals.

Susanna is also a dedicated advocate for modern music education, holding leadership and advisory roles in the International Kodály Society, the World Youth and Children Choral Artists' Association, the Malaysian Association for Music Education, and CHORALSPACE, Germany.



PROF. DR. JOSEPH GONZALES

Founder and Artistic Director, ASK Dance Company

Joseph Gonzales is a Professor at the Hong Kong Academy of Performing Arts with 17 years as Dean and a former Faculty of Dance lecturer at the National Academy of Arts Malaysia.

He has a distinguished career in various genres, including performances and choreography for renowned groups like Kuala Lumpur Dance Theatre, St. Moritz Dancers, and West End's The King & I, as well as appearances in television commercials and the gamelan concert Maya: Gong Illusions.

Joseph holds a PhD in Dance Studies from the University of Malaya, a Master of Arts in Choreography from Middlesex University, a Bachelor of Science in Mathematics, and Diplomas in Ballet, Modern Dance, and Performing Arts from prestigious UK institutions.

Not only is he a multi-award-winning choreographer, curator of the international Tari series, and the initiator of acclaimed dance production brands Jamu, Tapestry, and Gelombang Baru, but Joseph is also a respected author, recognised for his contributions to radio and television sports broadcasts and reality dance programmes.



DATO' DR. FARIDAH MERICAN

Adjunct Professor & Programme development Director

Affectionately referred to in the Performing Arts Community as 'the First Lady of Malaysian Theatre', Faridah's early acting credits include such plays as 'Lela Mayang', 'Tok Perak', 'Uda dan Dara' and 'Alang Rentak Seribu', works that defined the Malaysian theatre in the 60s and 70s, and determined the direction that theatre would take in the next few decades. In the early 60s, she joined Radio and TV Malaysia.

Simultaneously, Faridah was involved in the formative years of Malaysian Advertising, and is today, a member of the board of directors of Ogilvy & Mather. She is also a member of ASWARA's Post-Graduate Quality Assurance Committee, and the Executive Producer and Co-founder of the Performing Arts Centre of Penang.

For her contribution to the growth of performing arts, she was awarded the BOH Cameronian Lifetime Achievement Award in 2004. In July 2005, Faridah was conferred the 'Darjah Dato' Paduka Tuanku Ja'afar by the Yang Di-Pertuan Besar of Negeri Sembilan on the occasion of His Highness' 83rd Birthday. In 2014, Faridah received the Outstanding Achievement Award under the Arts, Culture and Entertainment category of the Inaugural Malaysian Women of Excellence Awards.



JOE HASHAM OAM

Adjunct Professor & Programme Artistic Director

Joe was born in Tripoli, Lebanon, did his schooling in Sydney, Australia, moved to Malaysia in 1984 and is now a proud permanent resident of his adopted country. He graduated from NIDA (National Institute of Dramatic Art), University of NSW, Sydney, Australia. Before he made the decision to come to Malaysia, he was one of the most sought after actors in Australia.

Today, he is known as a multi-award winning director, actor, writer and recording artist. Joe, with his wife, made theatre history when they built the first privately owned and operated theatre in the history of Malaysian Theatre. He is Artistic Director and co-founder of The Actors Studio (Malaysia), which he set up with his wife Faridah in 1989 and also Artistic Director and co-founder of The Kuala Lumpur Performing Arts Centre (klpac) and the Performing Arts Centre of Penang (penangpac).

Joe was awarded the Order of Australia Medal (OAM) as part of Queen Elizabeth's Birthday Honours List in 2009 for his outstanding contribution and service to the Performing Arts of Australia and Malaysia.



RAZIMAN SARBINI

Programme Director

An award-winning dancer and choreographer with over 14 years of experience in the Performing Arts, Raziman Sarbini has cemented his place as a key figure in Malaysia's contemporary dance scene. His professional journey has taken him to global stages, from Malaysia to New York City and London, where he has collaborated with some of the most renowned artists in the industry. His time with the world-famous Akram Khan Company in London has further enhanced his reputation as a performer of exceptional technical skill and artistic depth.

Currently, Raziman is focused on creating innovative works that enrich Malaysia's dance landscape by exploring contemporary forms while embracing traditional cultural elements. His passion for weaving together past and present dance styles has shaped a distinctive narrative in the Malaysian contemporary dance scene.

In 2020, Raziman embarked on a new chapter in his career, pursuing performing arts education at a renowned University. He now serves as a Programme Director at Taylor's University, where he is dedicated to nurturing the next generation of talents in the industry. Through his leadership and mentorship, Raziman continues to inspire young dancers to push the boundaries of creative expression, contributing to the vibrant growth of Malaysia's performing arts community.

AWARDS & ACHIEVEMENTS

2025



Top 150 in the World by QS World University Rankings by Subject 2025 for Social Sciences & Management and Arts & Humanities



Top 375 in the World by QS World University Rankings by Subject 2025 for Sociology

2024



Top 200 in the World by QS World University Rankings by Subject 2024 for Social Sciences & Management and Sociology



Top 250 in the World by QS World University Rankings by Subject 2024 for Arts & Humanities

2022



Represented Malaysia in the Asian Youth Theatre Festival 2022 and 2023



Partnership with Ask Dance Company and Young Choral Academy for the dance and music specialisations



Launch of Heart Psychological Services to Provide Affordable Mental Health Services to All,



Exemplary Meritorious Academic Staff Award (Emas Award)
(Dr Lim Hooi Shan and Mark Beau De Silva)



Best Oral Presenter and Best Presenter (Virtual) At Malaysian Psychology Student Assembly



Invention, Innovation and Design On E-Learning (Iidel) 2022
2 Gold Awards
4 Silver Awards
1 Bronze Award



Launch of Master Of Counselling Programme

2021



International E-Content Development Competition 2021 (E-Condev 2021)
2 Gold Awards (Pitching Category And Mooc Category)



International University Carnival On E-Learning (Iucel) 2021
Best Trend-Setter Award
Bronze Award



National E-Content Development Competition (Econdev)
2 Gold Award



Invention, Innovation & Design On E-Learning (Iidel) Competition
Bronze Award



International Innovation Competition (INNOCOM II)
2 Silver Awards



Innovative Competition And Exhibition
Gold Award



Innovative Invention Design E-Learning Competition
Silver Award



Qs-Wharton Reimagine Education Award 2021
Jury



Launch of Master of Clinical Psychology, 2021



Launch of Bachelor of Social Science (Hons) In International Relations, 2021



Bachelor of Psychology Offered A Global Classroom With Leeds Trinity University, UK and University Of Opole, Poland, 2021

2020



Taylor's Distinguished e-Learning Educator Award (2020)



The 4th Bogor International Conference For Social Science 2020
Best Presenter



Exemplary Meritorious Academic Staff Award (Emas Award)
Online Assessment



Short & Sweet Competition – Festival Directors Award 2020 (Bachelor of Performing Arts)



High Impact International Partnerships With the High Commission of Bangladesh In Malaysia and University Of Dhaka, 2020-Present



Launch of Centre for Human Excellence and Development, 2020

STUDENT AWARDS



Best Paper for MAPSA
Malaysian Psychology Student Assembly Conference 2021
(Bachelor of Psychology)



International Conference Advance Marketing 2021
(Bachelor of Psychology)
2 Bronze Awards



Mercedes Benz Creative Excellence Award
Best Overall Production 2021
(Bachelor of Performing Arts)



Mercedes Benz Creative Excellence Award
Audience Choice Award 2021
(Dance Category)
(Bachelor of Performing Arts)

REFERENCE LIST

Best Psychology Degrees.com

<https://www.bestpsychologydegrees.com/faq/what-is-cyber-psychology/>

June Gruber Assistant professor of psychology,
Director, Positive Emotion and Psychopathology
Laboratory, Yale University

Online Psychology Degree Guide

<https://www.onlinepsychologydegree.info/faq/what-is-the-future-outlook-for-careers-in-psychology/>

American Psychological Association

<https://www.apa.org/monitor/2022/01/special-rise-psychologists>

Youth Insights

<https://www.youthinsights.org/post/where-is-the-future-of-psychology>

GLOBAL CONNECTIONS



LEADERS

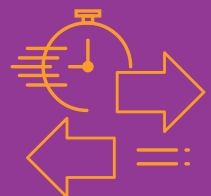
IN THE
GLOBAL
COMMUNITY



STUDENT EXCHANGE

SHORT TERM

MOBILITY



Taylor's is strongly committed to its mission of empowering the youth of the world through education, so that they may take their productive places as leaders in the global community.

As one of Malaysia's oldest, most successful and reputable private education institutions, Taylor's provides quality education and exposes students to the vast possibilities that await them beyond the classroom walls.

Through its partnerships with international universities and industry members, Taylor's is committed to providing an outstanding educational experience, guiding and helping students realise their potential to obtain a world-class qualification that meets the requirements of a dynamic, global marketplace.

GLOBAL EXCHANGE EXPERIENCES

SCAN TO
LEARN MORE

Are you eager to become a global citizen, broaden your horizons, and enrich your international perspective? Taylor's Global Mobility Programme provides students with the opportunity to widen their international exposure allowing students to gain new knowledge and skills in an area that is of interest to them thus benefiting from a multi-disciplinary learning environment and give their Taylor's degree an international edge.



TAYLOR'SPHERE CONNECTIONS & SUPPORT

RESEARCH AND TECHNOLOGY INNOVATION

Taylor's University has a firm footing in research and technology innovation as we believe these efforts will contribute towards knowledge building and assist in the development of the industry and society at large now and for the future. We adopt a progressive outlook, embedding research components throughout our programmes and encouraging them at various levels in each faculty.

OUR RESEARCH CENTRES PLAY A CRUCIAL ROLE IN ELEVATING THE CAPABILITIES OF OUR FACULTY MEMBERS THROUGH VARIOUS TRAINING ACTIVITIES AND TECHNOLOGY, MAKING US WORLD-CLASS.



Law
(CRELDA)



Engineering
(CERD)



Business (Case &
Research Centre)



Hospitality, Tourism
& Culinary Arts (CRiT)



Business
(CAFÉ)



Architecture, Building
& Design (MASSA)



Communication
(SEARCH)



Centre for Human
Excellence and
Development (CHED)

Master of Clinical Psychology

FULL-TIME 2 YEARS

KPT/JPS (N/311/7/0113) (MQA/FA13961) 07/28

 **INTAKES:** APRIL, SEPTEMBER


ABOUT THE PROGRAMME

The Master of Clinical Psychology programme is a two-year programme designed to meet the needs of those who are passionate in pursuing a specialised profession in Clinical Psychology and are committed in improving the well-being of individuals with psychological disorders. The programme aims to produce professional, qualified, and competent clinical psychologists in the areas of expertise of diagnosis, psychological assessment, psychotherapy, intervention, clinical research, and preventions of mental health issues. This programme complies with the standards and requirements of the Malaysian Allied Health Professions Council, Malaysia's Allied Health Professions Act 2016 and the Malaysian Society of Clinical Psychology (MSCP).

PROGRAMME HIGHLIGHTS

- Complies with the practicum hours requirement set by the Malaysian Qualifications Agency, Malaysian Allied Health Professions Council and Malaysian Society of Clinical Psychology (MSCP) (minimum 1,200 hours)
- Graduates are eligible to register under Malaysian Allied Health Professions Council as a Registered Clinical Psychologist.
- Well set-up facilities and access to various psychological assessment tools for internal clinical practicum
- Graduates can work as a Scientist (researcher or academician) or as a Practitioner (Clinical Psychologist) through the teaching from experienced academic and industrial experts
- Students will conduct clinical research in an in-house clinical research lab equipped with cutting-edge technology (e.g. emotional micro-tracking, eye tracking machine and 360-degree video recording)

MODULES

- 10 Cores
- 2 Practicums
- 2 Research Projects

PROGRAMME STRUCTURE

YEAR 1

- Adult Clinical Psychology
- Child and Adolescent Clinical Psychology
- Psychological Assessment and Diagnosis
- Psychological Interventions and Therapies
- Cognitive Behaviour Therapy
- Intermediate Research Methods
- Intermediate Psychological Statistics
- Clinical Neuropsychological Assessment
- Biological Psychology and Psychopharmacology
- Professional and Ethical Practice (Clinical)
- Clinical Practicum and Seminar I

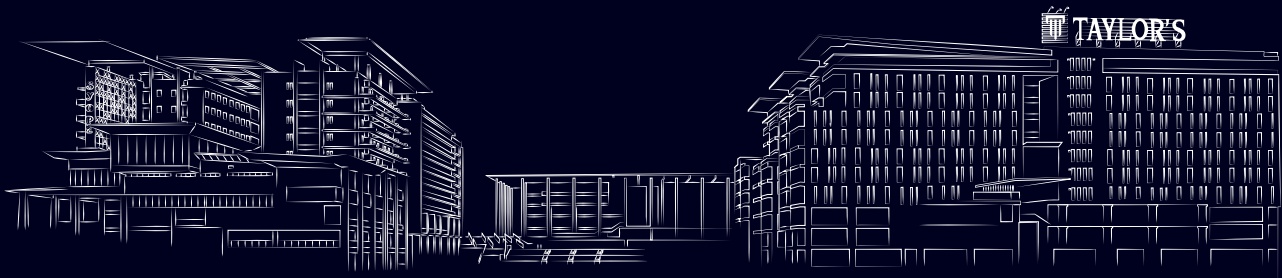
YEAR 2

- Research Project I
- Research Project II
- Clinical Practicum and Seminar II

SCHOLARSHIPS & BURSARIES

POSTGRADUATE

2 0 2 5



TAYLOR'S

SCHOLARSHIPS

TAYLOR'S UNIVERSITY HIGH ACHIEVER SCHOLARSHIP

PROGRAMME

Postgraduate Taught Programme (Conventional/Online Learning)

ELIGIBILITY

General Criteria

- Applicable to all students holding results from recognised institutions in Malaysia OR;
- Applicable to Malaysian students holding results from recognised overseas institutions
- Letter of Offer (LOO) required at point of application
- Applicable for Full-time/Part-time students
- Actual results required

Academic Criteria

- Bachelor's Degree: Minimum CGPA 3.50

Note: Interview is applicable for shortlisted candidates only.

ASSESSMENT

- Written Assessment
- Interview

QUANTUM

- 50% tuition fee waiver

TAYLOR'S RESEARCH EXCELLENCE SCHOLARSHIP (SCHEME A PLUS)

PROGRAMME

Doctor of Philosophy (PhD)

ELIGIBILITY

Academic Criteria

- Bachelor's Degree: Minimum CGPA of 3.50; AND
- Master's Degree (Coursework/Mixed mode): Minimum CGPA 3.50 from any recognised institution; OR
- Master's Degree (Research mode) from any recognised institution
- Applicants with publication in Citation Indexed Journal (CIJ) will have an added advantage

Minimum Publication Requirement

- Two (2) articles accepted in Scopus and/or Clarivate Indexed journals before graduation.

Notes:

All the other fees are covered except for enrolment and visa-related fees

Applicable to Science, Medical Science, Pharmaceutical Science, Engineering & Computer Science programmes only

ASSESSMENT

- Interview

QUANTUM

- 100% tuition fee waiver for a maximum of 36 months (Full-time study)
- Monthly stipend of RM3,200 for a maximum of 36 months
- Conference allowance up to RM3,000

TAYLOR'S RESEARCH EXCELLENCE SCHOLARSHIP (SCHEME A)

PROGRAMME

Doctor of Philosophy (PhD)

ELIGIBILITY

Academic Criteria

- Bachelor's Degree: Minimum CGPA 3.33 AND;
- Master's Degree (Coursework/Mixed mode): Minimum CGPA 3.50 from any recognised institution OR;
- Master's Degree (Research mode) from any recognised institution
- Applicant with publication in Citation Indexed Journal (CIJ) will have an added advantage

Minimum Publication Requirement

- One (1) article accepted and one (1) under review in Scopus and/or Clarivate Indexed journals before graduation.

Note: All the other fees are covered except for enrolment and visa-related fees.

ASSESSMENT

- Interview

QUANTUM

- 100% tuition fee waiver for a maximum of 36 months (Full-time study)
- Monthly stipend of RM2,300 for a maximum of 36 months
- Conference allowance up to RM3,000

TAYLOR'S RESEARCH EXCELLENCE SCHOLARSHIP (SCHEME B)

PROGRAMME

Doctor of Philosophy (PhD)/Master's by Research Programme

ELIGIBILITY

Doctor of Philosophy (PhD)

Academic Criteria

- Master's Degree (Coursework/Mixed mode): Minimum CGPA 3.50 from any recognised institution OR;
- Master's Degree (Research mode) from any recognised institution

Minimum Publication Requirement

- One (1) article accepted in Scopus and/or Clarivate Indexed journals before graduation.

QUANTUM

Doctor of Philosophy (PhD)

- 100% tuition fee waiver for a maximum of 36 months (Full-time study)
- Monthly stipend of RM1,900 for a maximum of 36 months

Note: International Student Charge and International Student Annual Fee are waived for first year of PhD and Master's programmes.

ASSESSMENT

- Interview

Master's by Research Programme

Academic Criteria

- Bachelor's Degree: Minimum CGPA 3.00 from any recognised institution

Minimum Publication Requirement

- One (1) article accepted in Scopus and/or Clarivate Indexed journals before graduation.

Master's by Research Programme

- 100% tuition fee waiver for a maximum of 24 months (Full-time study)
- Monthly stipend of RM1,500 for a maximum of 24 months

TAYLOR'S RESEARCH EXCELLENCE SCHOLARSHIP (SCHEME C)

PROGRAMME

Doctor of Philosophy (PhD)/Master's by Research Programme

ELIGIBILITY

Doctor of Philosophy (PhD)

Academic Criteria

- Master's Degree (Coursework/Mixed mode): Minimum CGPA 3.00 from any recognised institution OR;
- Master's Degree (Research mode) from any recognised institution

Minimum Publication Requirement

- One (1) article accepted in Scopus and/or Clarivate Indexed journals before graduation.

QUANTUM

Doctor of Philosophy (PhD)

- 100% tuition fee waiver for a maximum of 36 months (Full-time study)

Note: Only applicable for candidate accepted into a funded research project carried out by Taylor's University or when the candidate has the expertise that the faculty requires for teaching/tutoring purposes

ASSESSMENT

- Interview

Master's by Research Programme

Academic Criteria

- Bachelor's Degree: Minimum CGPA 3.00 from any recognised institution

Minimum Publication Requirement

- One (1) article accepted in Scopus and/or Clarivate Indexed journals before graduation.

Master's by Research Programme

- 100% tuition fee waiver for a maximum of 24 months (Full-time study)

TAYLOR'S INDUSTRY PARTNER SCHOLARSHIP (TIPS) (SCHEME D)

PROGRAMME

Doctor of Philosophy (PhD)/Master's by Research Programme

ELIGIBILITY

Doctor of Philosophy (PhD)

General Criteria

- Meet minimum programme entry requirements in both academic and English language proficiency for respective research programmes
- Applicable to non-academic industry professionals from an organisation related to the field of study
- Recommendation from respective organisations required at point of application

Minimum Publication Requirement

- One (1) article accepted in Scopus and/or Clarivate Indexed journals before graduation.

QUANTUM

Doctor of Philosophy (PhD)

- 50% tuition fee waiver for a maximum of 36 months (Full-time study)
- 50% tuition fee waiver for a maximum of 48 months (Part-time study)

ASSESSMENT

- Interview

Master's by Research Programme

General Criteria

- Meet minimum programme entry requirements in both academic and English language proficiency for respective research programmes
- Applicable to non-academic industry professionals from an organisation related to the field of study
- Recommendation from respective organisations required at point of application

Minimum Publication Requirement

- One (1) article accepted in Scopus and/or Clarivate Indexed journals before graduation.

Master's by Research Programme

- 50% tuition fee waiver for a maximum of 24 months (Full-time study)
- 50% tuition fee waiver for a maximum of 36 months (Part-time study)

TAYLOR'S ACADEMIC PARTNER SCHOLARSHIP (TAPS) (SCHEME D)

PROGRAMME

Doctor of Philosophy (PhD)/Master's by Research Programme

ELIGIBILITY

Doctor of Philosophy (PhD)

General Criteria

- Meet minimum programme entry requirements in both academic and English language proficiency for respective research programmes
- Applicable to academics from an educational institution
- Recommendation from respective institutions required at point of application

Minimum Publication Requirement

- One (1) article accepted in Scopus and/or Clarivate Indexed journals before graduation.

QUANTUM

Doctor of Philosophy (PhD)

- 50% tuition fee waiver for a maximum of 36 months (Full-time study)
- 50% tuition fee waiver for a maximum of 48 months (Part-time study)

ASSESSMENT

- Interview

Master's by Research Programme

General Criteria

- Meet minimum programme entry requirements in both academic and English language proficiency for respective research programmes
- Applicable to academics from an educational institution
- Recommendation from respective institutions required at point of application

Minimum Publication Requirement

- One (1) article accepted in Scopus and/or Clarivate Indexed journals before graduation.

Master's by Research Programme

- 50% tuition fee waiver for a maximum of 24 months (Full-time study)
- 50% tuition fee waiver for a maximum of 36 months (Part-time study)

ASEAN TOURISM SCHOLARSHIP (ATS) MASTER'S BY RESEARCH

PROGRAMME

Master's by Research Programme

ELIGIBILITY

General Criteria

- Research proposal must be relevant to the ASEAN Tourism Strategic Plan (ATSP) 2016 – 2025 priority areas

Academic Criteria

- Bachelor's Degree: Minimum CGPA 3.00 from any recognised institution

Minimum Publication Requirement

- One (1) article accepted in Scopus and/or Clarivate Indexed journals before graduation.

Note: International Student Charge and International Student Annual Fee are waived for first year of Master's programmes.

ASSESSMENT

- Interview

QUANTUM

- 100% tuition fee waiver for a maximum of 24 months (Full-time study)
- Monthly stipend of RM1,500 for a maximum of 24 months

ASEAN TOURISM SCHOLARSHIP (ATS) PHD

PROGRAMME

Doctor of Philosophy (PhD)

ELIGIBILITY

General Criteria

- Research proposal must be relevant to the ASEAN Tourism Strategic Plan (ATSP) 2016 – 2025 priority areas
- Applicant with publication in Citation Indexed Journal (CIJ) will have an added advantage

Academic Criteria

- Bachelor's Degree: Minimum CGPA 3.33 AND;
- Master's Degree (Coursework/Mixed mode): Minimum CGPA 3.50 from any recognised institution OR;
- Master's Degree (Research mode) from any recognised institution

Minimum Publication Requirement

- One (1) article accepted and one (1) under review in Scopus and/or Clarivate Indexed journals before graduation.

Note: All the other fees are covered except for enrolment and visa-related fees

ASSESSMENT

- Interview

QUANTUM

- 100% tuition fee waiver for a maximum of 36 months (Full-time study)
- Monthly stipend of RM2,300 for a maximum of 36 months
- Conference allowance up to RM3,000

BURSARIES

POSTGRADUATE RESEARCH PROGRAMME BURSARY

PROGRAMME

Postgraduate Research Programme (Conventional only)

QUANTUM

- Up to RM5,000 tuition fee waiver

ELIGIBILITY

General Criteria

- Applicable to self-funding student applying for Postgraduate (Research) Programme

Academic Criteria

- Meet minimum programme entry requirements

POSTGRADUATE TAUGHT PROGRAMME BURSARY

PROGRAMME

Postgraduate Taught Programme (Conventional only)

QUANTUM

Criteria	Quantum
CGPA 2.90 till CGPA 3.29	Up to RM5,000 tuition fee waiver
CGPA 3.30 till CGPA 3.49	Up to RM7,000 tuition fee waiver
CGPA 3.50 and above	Up to RM10,000 tuition fee waiver

ELIGIBILITY

General Criteria

- Applicable to New/Transfer (Non-Taylor's) students applying for Postgraduate (Taught) Programme except Postgraduate Certificate in Teaching and Learning, or Postgraduate Certificate in Education, or any Online Postgraduate Programme (OPP)

Academic Criteria

- Meet minimum programme entry requirement and bursary CGPA requirements

POSTGRADUATE TAUGHT PROGRAMME (APEL BURSARY)

PROGRAMME

Postgraduate Taught Programme (Conventional only)

QUANTUM

- Up to RM5,000 tuition fee waiver

ELIGIBILITY

General Criteria

- Applicable to New/Transfer (Non-Taylor's) students applying for Postgraduate (Taught) Programme except Postgraduate Certificate in Teaching and Learning, or Postgraduate Certificate in Education, or any Online Postgraduate Programme (OPP)

Academic Criteria

- Meet minimum programme entry requirements based on APEL Certification

POSTGRADUATE TAUGHT PROGRAMME (PROGRESSION & ALUMNI BURSARY)

PROGRAMME

Postgraduate Taught Programme (Conventional/Online Learning)

QUANTUM

Conventional Postgraduate Programme only

- CGPA 3.30 and above: Up to RM10,000 tuition fee waiver
- Meet Programme Entry Requirement: Up to RM7,000 tuition fee waiver

Online Postgraduate Programme only

- Meet Programme Entry Requirement: Up to RM3,500 tuition fee waiver

ELIGIBILITY

General Criteria

- Applicable to Taylor's University Bachelor's Degree students/alumni progressing into Postgraduate (Taught) Programme except Postgraduate Certificate in Teaching and Learning, or online Postgraduate Certificate in Education.

Academic Criteria

- Meet minimum programme entry requirement and bursary CGPA requirements

TERMS AND CONDITIONS

TAYLOR'S POSTGRADUATE RESEARCH SCHOLARSHIPS 2025

- Scholarship offered are for 2025 intakes only.
- All 2025 scholarships are applicable for studies at Taylor's in Malaysia only.
- The scholarship is a fee waiver; it is not exchangeable for cash, is non-transferable and non-refundable. Upon recipient successfully graduating (Scheme A Plus, Scheme A, ATS PhD, Scheme B and ATS Master's recipients), TU or any other institutions under Taylor's Education Group shall be the first choice of employment for two (2) years unless the Faculty waives this employment right (consent not to be unreasonably withheld).
- The scholarship does not cover fees such as the International Student Annual Fee, EMGS Visa Application Fee, International Student Charge Hospitalisation and Surgical Insurance Fee, EMGS Renewal Fee or any other Visa-related Fee.
- Recipients are entitled to only ONE type of bursary/scholarship/waiver/discount at any one time, including sponsorship from other institutions/bodies. The one with the highest quantum will automatically apply.
- If the recipient does not accept the scholarship offered by the stipulated date, it will automatically be withdrawn and no longer be deemed valid.
- Should recipients defer semester or intake, the scholarship shall be revoked.
- A scholarship offer is valid for the standard duration of the stipulated course and is non-transferable.
- The scholarship does not cover repeat attempts of subjects and thesis examinations.
- Scholarship recipients understand and accept the responsibility of being an exemplary student at Taylor's University. They must recognise that their behaviour and general conduct must, at all times, be above reproach, and comply with all existing rules, regulations, requirements and policies of Taylor's University. They should not be involved, engaged in or participate in any political, illegal or unlawful activity as a recipient of the scholarship.
- All Scheme A Plus, Scheme A, ATS, Scheme B and Scheme C scholarship recipients are required to join the Tutor Development Program during the duration of their scholarship.
- The scholarship recipients are required to fulfil the allocation of weekly workload under the purview of the Head of School or Executive Dean:
 - Scheme A Plus (6-hour)
 - Scheme A, ATS PhD, Scheme B and ATS Master's (5-hour)
 - Scheme C (4-hour)
- Upon accepting this scholarship, the recipient is deemed to have accepted all terms and conditions stipulated. The recipient also agrees to indemnify and hold Taylor's harmless of and from any demands, claims, liabilities or actions of any kind whatsoever.
- Scholarship recipients are not allowed to defer their semesters. If the recipient defers the semester, the scholarship shall be automatically terminated. However, should the recipient request a deferment due to any substantial reason backed by the supervisor or school, his/her scholarship may be retained, subject to the absolute discretion of the Higher Degrees by the Research Committee.
- The recipients must meet the milestones on time and progress satisfactorily every semester. Unsatisfactory progress shall lead to revoking of scholarship.
- All decisions by Taylor's University are final, and no further appeals shall be entertained.
- Taylor's University reserves the right to involve the scholarship recipients in interviews, advertisement, photography or any other publicity-related activities.
- The recipient acknowledges and consents to comply with the regulations by Taylor's University covering the Programme in which the scholarship recipient is enrolled, including progression, reporting and examination.
- All materials and works created (at any point), developed or authored by recipients in the course of activities undertaken under this award letter (the "Work Product"), and all copyright and other rights of any kind in the Work Product, shall be the exclusive property of Taylor's University.
- Taylor's University may terminate the scholarship awarded at any time during the scholarship by giving three (3) months' notice in writing to the recipient, without assigning any reasons therefore and thereupon all benefits to the recipient under this Contract absolutely terminates and no actions shall be brought or maintained by one party against the other.
- This sponsorship shall be acknowledged in all publications resulting from the Research using the language: "This work was supported by Taylor's University through its TAYLOR'S RESEARCH SCHOLARSHIP Programme".
- The parties hereby, mutually agree that in the event the recipient wishes to renege the entire Programme upon the Student's failure to obtain the requisite qualification at the first instance, the recipient may do so at the recipient's own expense, and the Taylor's University shall not be liable for any fees and/or other expenses that may be due and payable.
- The terms and conditions of scholarships may be modified and amended from time to time as deemed appropriate by Taylor's University.
- The recipient agrees to comply with all terms and conditions stipulated in the "Postgraduate (Research) Supplementary Handbook".
- This Award letter together with its Annexure constitutes the entire agreement between the Parties concerning the subject.

TAYLOR'S POSTGRADUATE (TAUGHT) SCHOLARSHIPS AND BURSARIES 2025

- Scholarships and bursaries listed are applicable for 2025 intakes only and are subject to availability on a first-come, first-serve basis.
- Scholarships and selected bursaries are applicable for all Malaysian or International students that hold academic results from any accredited institution in Malaysia and Malaysians from selected overseas institutions with selected qualifications. Clarification on accepted results may be obtained from the Scholarships Management through the student's appointed Counsellor.
- Scholarship application can only be made once for the particular level of study, at any one time and must be made at the point of enrolment. Late application or re-application will not be entertained.
- All 2025 scholarships and bursaries are subject to the following eligibility criteria:
 - Studies conducted at Taylor's University, Malaysia only;
 - Registered students at Taylor's University;
 - The programme and intake offered as stated in the Letter of Offer only; and
 - Does not include a period of study at overseas partner institutions including student exchange, except where fee is payable to Taylor's University (where applicable).
- All scholarships are only applicable for students progressing to a higher qualification from the current highest achieved qualification commencing from semester 1 without any credit transfer (except for transfers from Diploma/Advanced Diploma to Degree). Clarification on exceptions may be obtained from the Scholarships Management through the student's appointed Counsellor.
- Applicants are only allowed to use actual results to apply for the scholarship, but the scholarship is conditional upon meeting the minimum course entry requirements or the conditions attached to the letter of offer.
- Applicants must be certain of their preferred intake and/or programme during the point of scholarship and bursary application. Should applicants defer or change to a different programme and/or intake of the same year or different year during the processing period, the application will be voided.
- Taylor's University reserves the right to rescind the offer if documents contain false information. This includes applications without required attachments.
- Applicants are required to apply for the scholarship before the application deadlines. Any late or incomplete application will not be accepted. No appeals will be entertained.
- Scholarship and bursary application deadlines may be revised at the sole discretion of Taylor's University without prior notice. Scholarship application deadlines can be found on the Taylor's University website.
- The scholarships and bursaries are applicable to the programme and intake granted. Any changes to the intake and/or programme of study that result in the modification of programme title and/or duration of studies and/or intake commencement will result in immediate termination of the scholarship/bursary. For special consideration, the recipient shall correspond in writing immediately with the Scholarships Management to notify of any such change. Any approval for exceptions or special considerations is at the absolute discretion of the Scholarships Management and is not guaranteed. Where changes are made without prior approval, Taylor's University reserves the right to withdraw the scholarship/bursary, and the recipient will be required to repay the total scholarship/bursary amount disbursed to him/her in full. All decisions made by Taylor's University are final and no further appeals shall be entertained.
- Recipients are expected to provide any document(s) as requested by the Scholarships Management at any given time within the stipulated deadline communicated to facilitate any requirements deemed necessary by Taylor's University. Failure to do so will result in the scholarship/bursary being terminated and the recipient to repay the scholarship/bursary amount disbursed to date in full.
- Recipients shall join the academic course at the given start date, failure to do so will result in immediate termination of the scholarship/bursary.
- The scholarship/bursary is a fee waiver; it is not exchangeable for cash, is non-transferable and non-refundable and the manner in which the awarded amount is disbursed will be decided by the Scholarships Management. Any requests to amend the quantum disbursement will not be entertained.
- The scholarship/bursary only covers the tuition fees and for avoidance of doubt does not cover fees such as the International Student Annual Fee, EMGS Visa Application Fee, International Student Charge, Hospitalisation and Surgical Insurance Fee, EMGS Renewal Fee or any other Visa-related Fee.
- The scholarship/bursary only covers subjects enrolled for the first time (first attempt) in the letter of offer. Retake of module or repeat of subject will not be covered by the scholarship/bursary.
- All fees should be paid by the stipulated deadline, refusal to do so either when awaiting the scholarship/bursary outcome announcement and/or throughout the duration of study will be subjected to terms of the institution policy which includes and is not limited to barring from classes and may result in the scholarship/bursary application being disqualified or scholarship/bursary being terminated and full fees being charged to the applicant/recipient.
- Recipients are required to provide any document(s) as requested by the Scholarships Management at any given time including sponsorships from other external institutions/bodies. Recipients shall inform the Scholarships Management of any other scholarships or sponsorship currently held or awarded at a later date. For scholarship and bursary recipients, this disbursement will cease in the event recipients accept any external scholarship. The one with the highest quantum will automatically apply.
- If the scholarship offer is not accepted by the given deadline in the letter of offer, it will be automatically withdrawn and voided. No appeals will be entertained.
- By accepting this offer, recipients understand and accept the responsibility of being an exemplary student ambassador for Taylor's University. Recipients must recognise that his/her behaviour and general conduct must, at all times, be above reproach and comply with all existing rules, regulations, requirements and policies of Taylor's University. Recipients should not be involved, engaged in, or participate in any political, illegal or unlawful activity as a recipient of the scholarship whether within or outside the University premises. Failure to comply will result in immediate termination of scholarship and possible suspension in line with Institution policy.
- Recipients agree to act in an ambassadorial capacity, to provide student profiles or testimonials, interviews, advertisements, photographs, or any other publicity-related activities if requested, and to attend scholarship or recruitment events as required for Taylor's University.
- Recipients are required to maintain satisfactory academic results as outlined by the minimum CGPA/score/grades specified in their scholarship offer letter throughout the standard programme duration. Failure to do so may result in the termination of the scholarship/bursary by Taylor's University at the discretion of the Scholarship Management, taking into consideration due process as per the Scholarship policy.
- By accepting this award, recipients are expected to join the Scholar's Club and attend any Scholar's Club activities/events organised by the Scholarships Management and Scholar's Committee during the duration of their scholarship and attendance is a requirement under this scholarship.
- Upon accepting this scholarship/bursary, recipients are deemed to have accepted all terms and conditions stipulated here.
- Recipients also agree to indemnify and hold Taylor's University harmless of and from any and all demands, claims, liabilities or actions of any kind whatsoever during their period of study at Taylor's University.
- In the event the recipient withdraws from the programme, is suspended or terminated by Taylor's University at any point of time before the completion of the programme, the scholarship/bursary shall be automatically terminated. However, should the recipient withdraw from the programme due to medical reasons, his/her scholarship/bursary may be retained, subject to the absolute discretion of the Scholarships Management.
- Taylor's University will be entitled to terminate the scholarship/bursary at any time, by immediate notice to the recipient in writing, in the event of:
 - misconduct, whether in connection with his/her study or otherwise;
 - failure to make such progress in his/her study as is considered satisfactory;
 - circumstances, such as illness, arising which, with the university's agreement, would render it impossible for the recipient to complete his/her scholarship satisfactorily or prevent the purpose of the scholarship/bursary from being fulfilled;
 - dismissal, for any reason, from the recipient's host university (if on student exchange programme);
 - breach of any local Malaysian law and practices;
 - conviction of bribery, in line with the Malaysian Anti-Corruption Act, the current scholarship/bursary will be rescinded, and the recipient will be banned from applying for any Taylor's financial aid and discounts for a period of up to five years;
 - failure to comply with the conditions of his/her visa (if international student); and
 - the discovery that the recipient has submitted fraudulent documentation.
- In the event of such termination, Taylor's University shall have no further obligation to the recipient, and the recipient shall be bound to repay the amount that has been paid/waived to him/her under the scholarship/bursary, unless:
 - the termination is a result of his/her ill health and this has been certified by a registered medical practitioner; and
 - Taylor's University has exercised its discretion to exempt the recipient from this condition.
- Any breach of the scholarship/bursary condition(s) is treated seriously and if the recipient believes to have breached a condition whether intentionally or unintentionally, the recipient should contact the Scholarships Management immediately to discuss the situation. Recipients are urged to take prompt action to resolve any misunderstanding that may arise as a result of the breach, accidental or otherwise.
- All decisions made by Taylor's University are final and no further appeals shall be entertained.
- Taylor's University has a range of social media platforms for scholars and alumni to interact with. We look forward to receiving recipients' comments and participation in discussions, and we encourage open, lively debate. However, we do request that our scholars, fellows, and alumni adhere to certain good practices and conventions of polite and constructive discourse.
- Recipients agree to be contacted by Taylor's University after graduation to be involved in interviews, advertisements, photography or other publicity-related activities for marketing purposes.
- The terms and conditions of scholarship/bursary may be modified and amended from time to time as deemed appropriate by Taylor's University and the current version can be found on the Taylor's University website.
- All information including personal data provided in the programme and scholarship/bursary application may be used by or on behalf of Taylor's University in the following manner and is not limited to:
 - processing of scholarship/bursary application, collection of feedback, communicate details of events, academic programmes and marketing information, and for any other purposes as required by Taylor's University; and
 - periodical audit by Taylor's University with regards to any information provided should the scholarship/bursary be administered, which includes and is not limited to grade reviews, semester status, and utilisation of data for institution needs.All data collected will be handled in strict accordance with the PDPA guidelines as per organisation policy.



MOHE Performance Rating



Putra Brand Awards



Reader's Digest Trusted Brand Awards



Taylor's College, Lakeside Campus (682946-T)

Block E, East Wing, Taylor's Lakeside Campus,
No.1, Jalan Taylor's, 47500 Subang Jaya,
Selangor Darul Ehsan, Malaysia.
Tel : +603 - 5629 5000
Fax : +603 - 5629 5001
Email : applications@taylors.edu.my
college.taylors.edu.my

Taylor's University Lakeside Campus JPT/BPP(D)1000-701502(3) DU023(B)

No.1, Jalan Taylor's, 47500 Subang Jaya,
Selangor Darul Ehsan, Malaysia.
Tel : +603-5629 5000
Fax : +603-5629 5001
Email : applications@taylors.edu.my
university.taylors.edu.my

This publication contains information, which is current as of November 2024. Changes in circumstances after this date may impact upon the accuracy or timeliness of the information. Taylor's University does its best to ensure that the information contained herein is accurate, but reserves the right to change any information described in this brochure without notice. Readers are responsible for verifying information that pertains to them by contacting the university.



**TAYLOR'S
UNIVERSITY**

Wisdom · Integrity · Excellence

Rise With The Best™

Where our community is our strength

Taylor's University Sdn. Bhd. (Co. No. 149634-D)
JPT/BPP(D)1000-701/502(16) DU023 (B)

No. 1, Jalan Taylor's, 47500 Subang Jaya,
Selangor Darul Ehsan, Malaysia.

Tel : +603-5629 5000

Fax : +603-5629 5001

Email : applications@taylors.edu.my

Website : university.taylors.edu.my

Taylor's Education Counselling Centres

• Penang office	Tel: +604-899 9396/ +604-892 0396	Mobile: +6012-632 9396
• Johor office	Tel: +607-351 3692 / 3694	Mobile: +6017-302 8188
• Sabah office	Tel: +6088-338898	Mobile: +6012-605 0802
• Sarawak office	Tel: +6082-384998	Mobile: +6016-760 7639
• Melaka Region	Mobile: +6012-655 0803	
• East Coast Region	Mobile: +6012-878 1907	

This publication contains information, which is current as of January 2024. Changes in circumstances after this date may impact upon the accuracy or timeliness of the information. Taylor's University does its best to ensure that the information contained herein is accurate, but reserves the right to change any information described in this prospectus without notice. Readers are responsible for verifying information that pertains to them by contacting the university.